

*Destination
Marine Services*

13.2m Survey Vessel



Mark Williamson Design

48 Sweetgum St, Ashmore Qld 4214, Australia

Ph: (617) 5597 3521 Fax: (617) 5597 3529 www.mwdesign.net.au

13.2m Survey Vessel



LOA : 14.0m
Lmoulded: 13.2m
LWL : 12.2m
Beam : 4.00m
Draft : 1.00m
Fuel : 2500lts
Water : 500lts
Main Engines : 2 x Cummins 6BT-M
157kW @ 2600rpm
Gearbox: ZF 80A 2.5:1
Propulsion : 2 x 26" FPP
Speed : 18 knots

Classification :
DNV ✕1A1 HSLC R3 PATROL
Survey USL 2B

Construction :
Marine Grade Aluminium

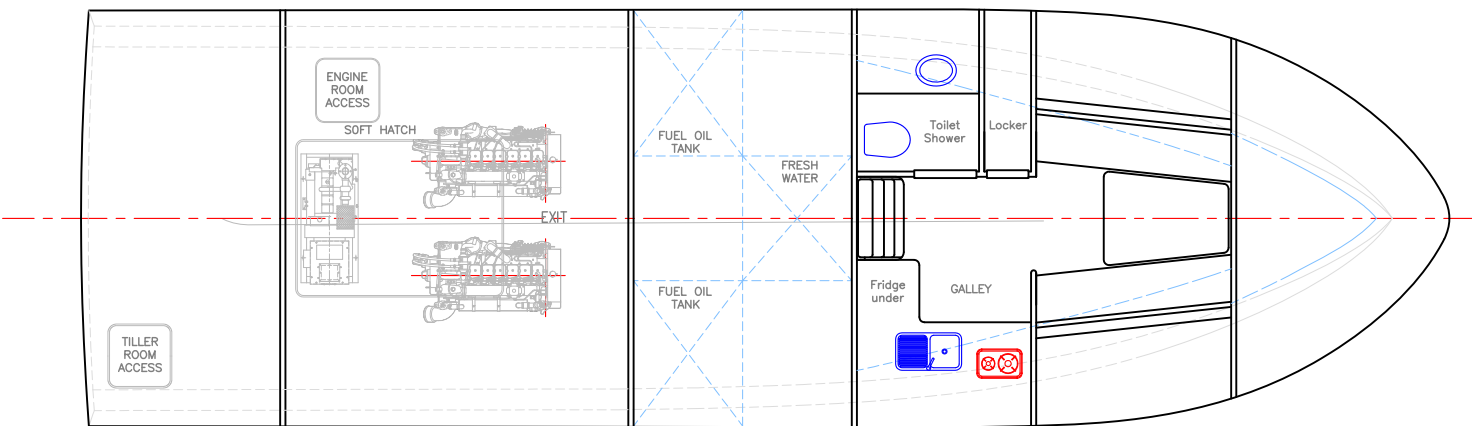
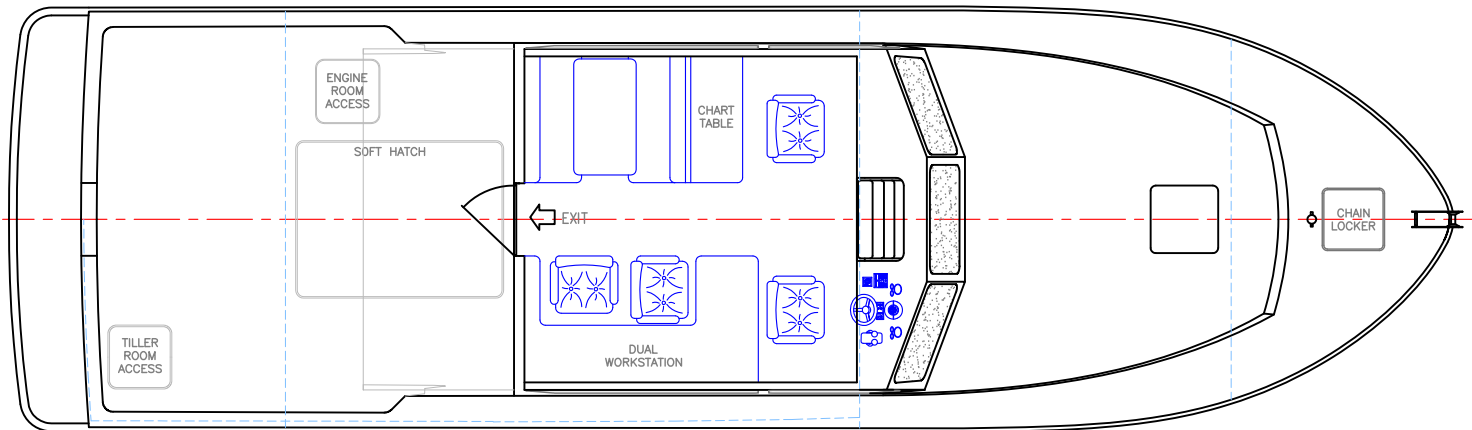
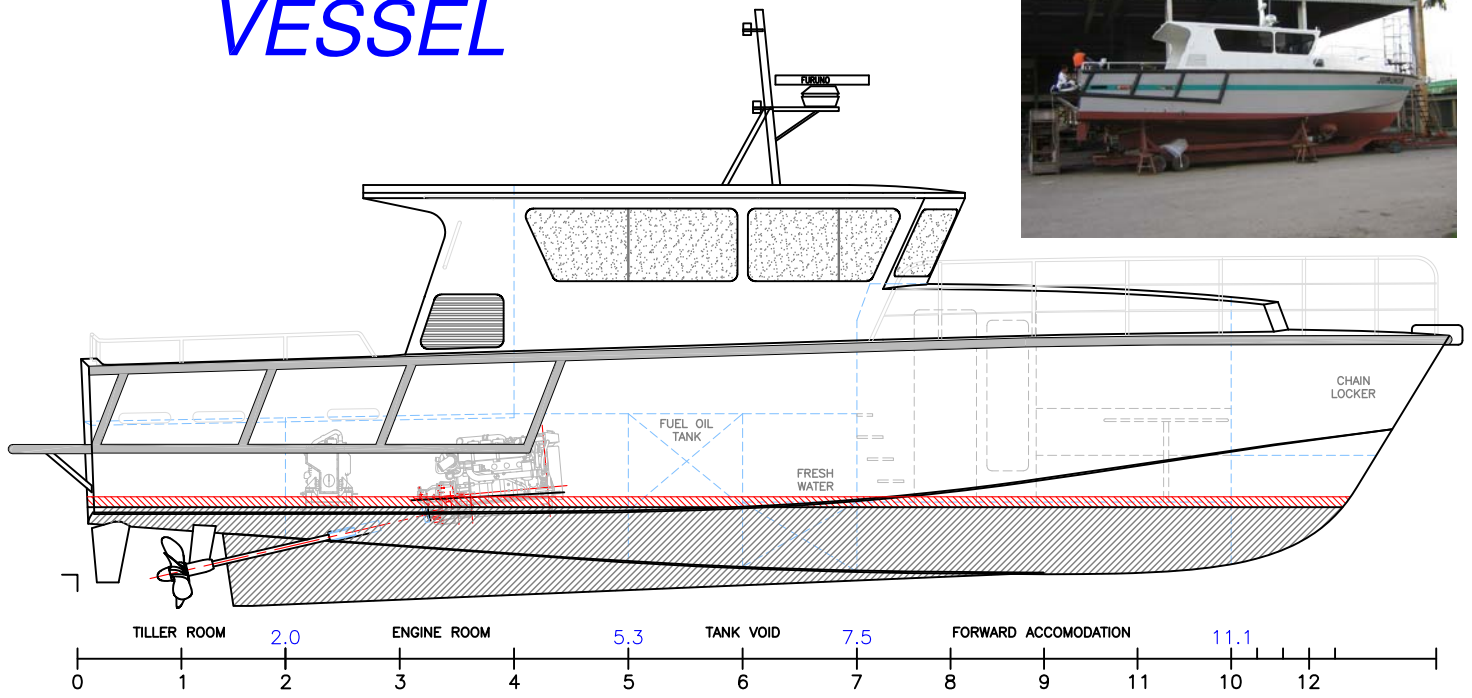


Mark Williamson Design

48 Sweetgum St, Ashmore Qld 4214, Australia

Ph: (617) 5597 3521 Fax: (617) 5597 3529 www.mwdesign.net.au

13.2m SURVEY VESSEL



Length Overall	14.00 metres	Main Engines	2 x CUMMINS 6BTA-M
Length Moulded	13.20 metres	Gearbox	ZF 80A 2.5:1 ratio
Length WL	12.10 metres	Propulsion	2 x 26" fixed pitch
Beam	4.00 metres		four blade prop
Draft	1.0 metres	Fuel Capacity	2,500 litres
Construction	Marine Grade Aluminium	Freshwater	500 litres
Maximum Speed	23 knots	Aft Deck Area	14.4 m ²
Cruising Speed	12 knots		

copyright ©

THIS DRAWING AND/OR SPECIFICATION IS THE PROPERTY OF MARK WILLIAMSON DESIGN PTY LTD. IT IS NOT TO BE USED BY OR DISCLOSED TO ANY THIRD PERSON WITHOUT THE EXPRESSED PERMISSION OF MARK WILLIAMSON DESIGN PTY LTD.

MARK WILLIAMSON DESIGN
Consulting Naval Architects & Mechanical Engineers

48 Sweetgum St, Ashmore, Queensland 4214, Australia
Ph: 617 5597 3521 Fax: 617 5597 3529 www.mwdesign.net.au

VESSEL:	14m SURVEY VESSEL
TITLE:	GENERAL ARRANGEMENT
DWG No:	S14-100C
SCALE:	1:70
DATE:	26/4/2005
DRAWN:	MDW