

# *LightCraft*

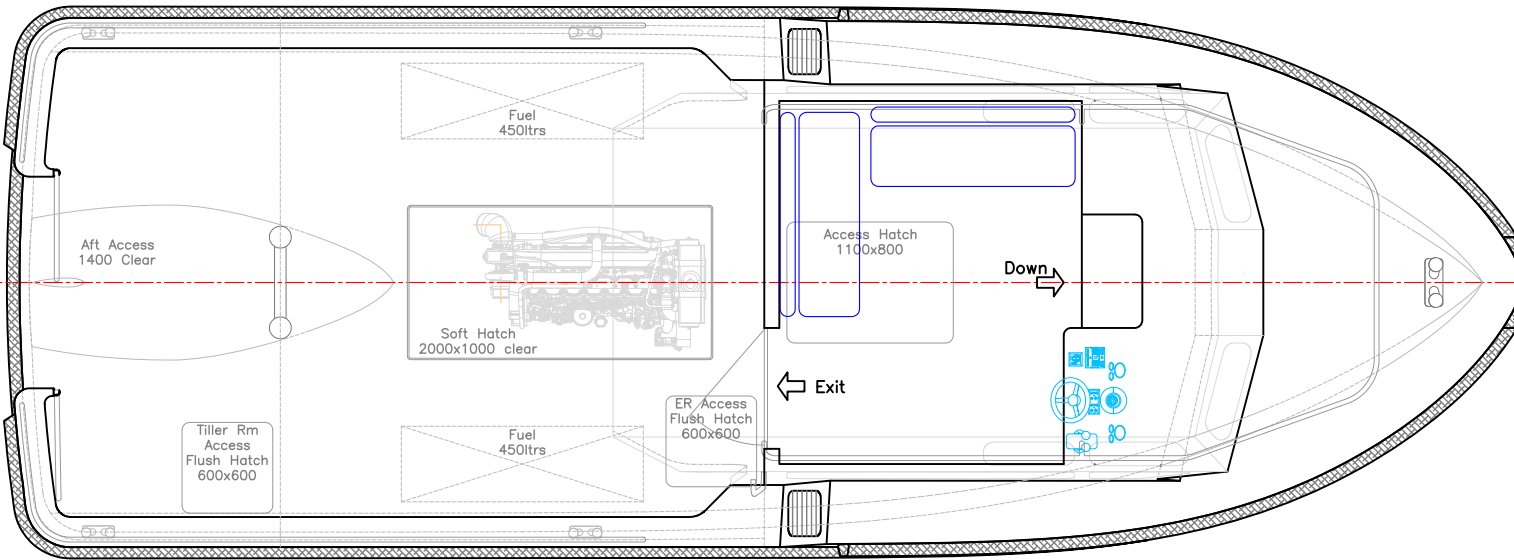
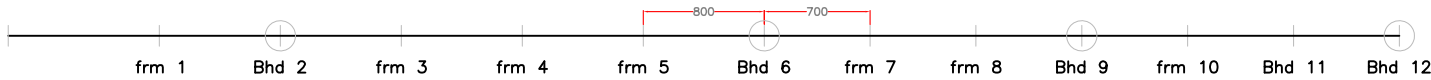
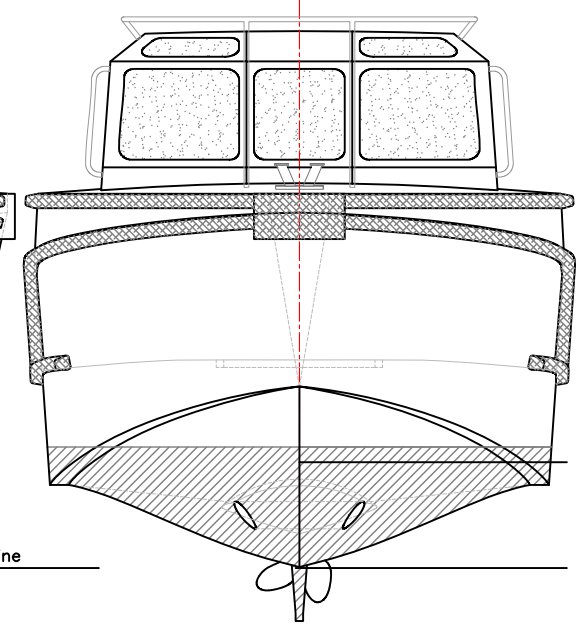
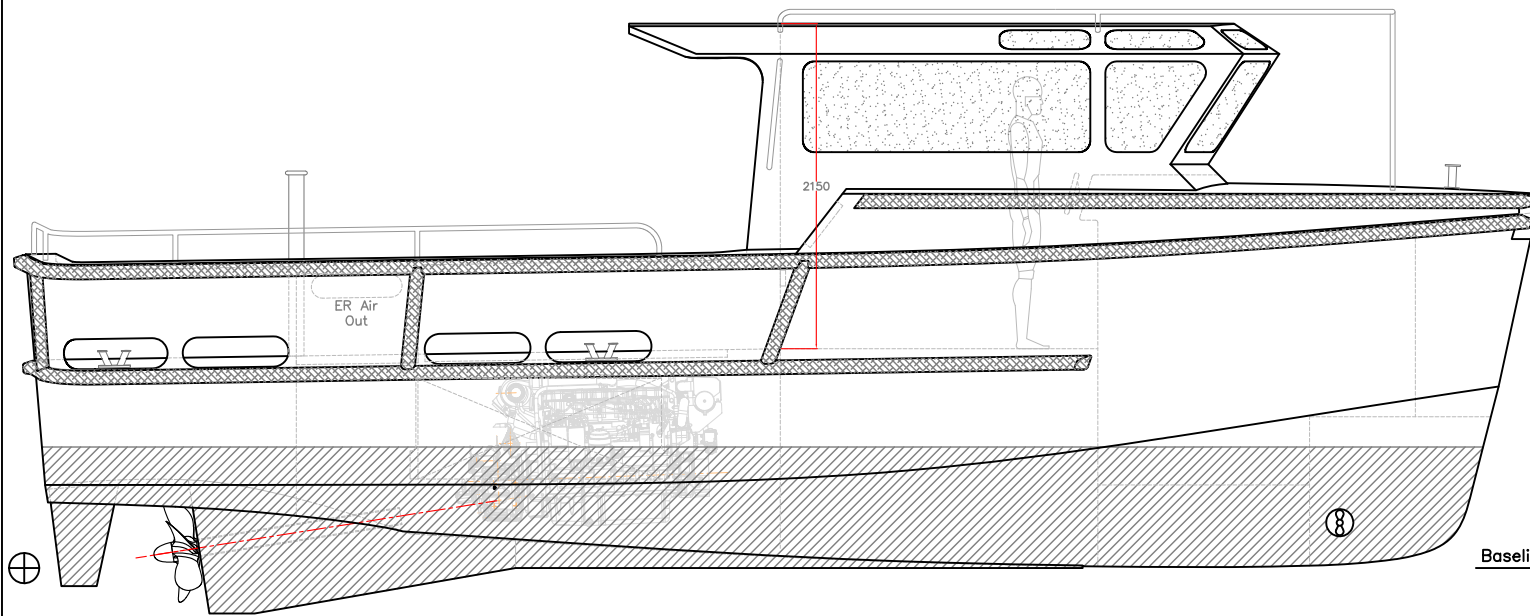
Aluminium Workboats

*10m Workboat*



*SCY Design*

48 Sweetgum St, Ashmore Qld 4214, Australia  
Ph: (617) 5597 3521 [www.scy.net.au](http://www.scy.net.au)



**PRINCIPAL DATA**

Length Overall	10.0 metres
Length WL	9.5metres
Beam	3.5 metres
Draft	1.05 metres
Fuel	900ltrs
Main Engine	John Deere 6081AFM75
	375hp @ 2400rpm
Gearbox	ZF 280A
Propeller	28"

Construction:  
Marine Grade Aluminium  
Survey: USL 2C

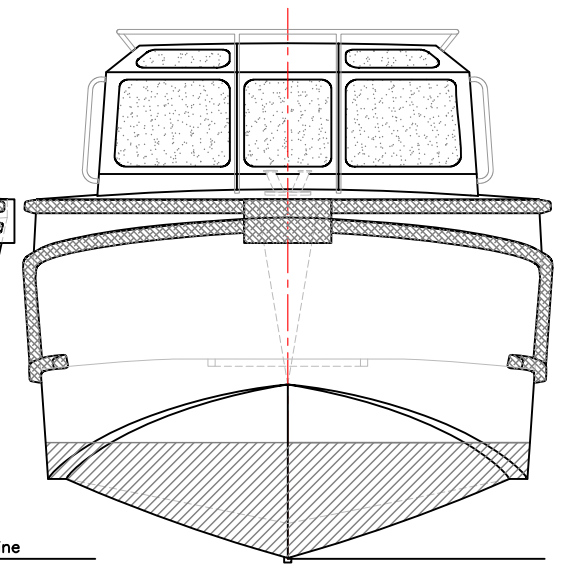
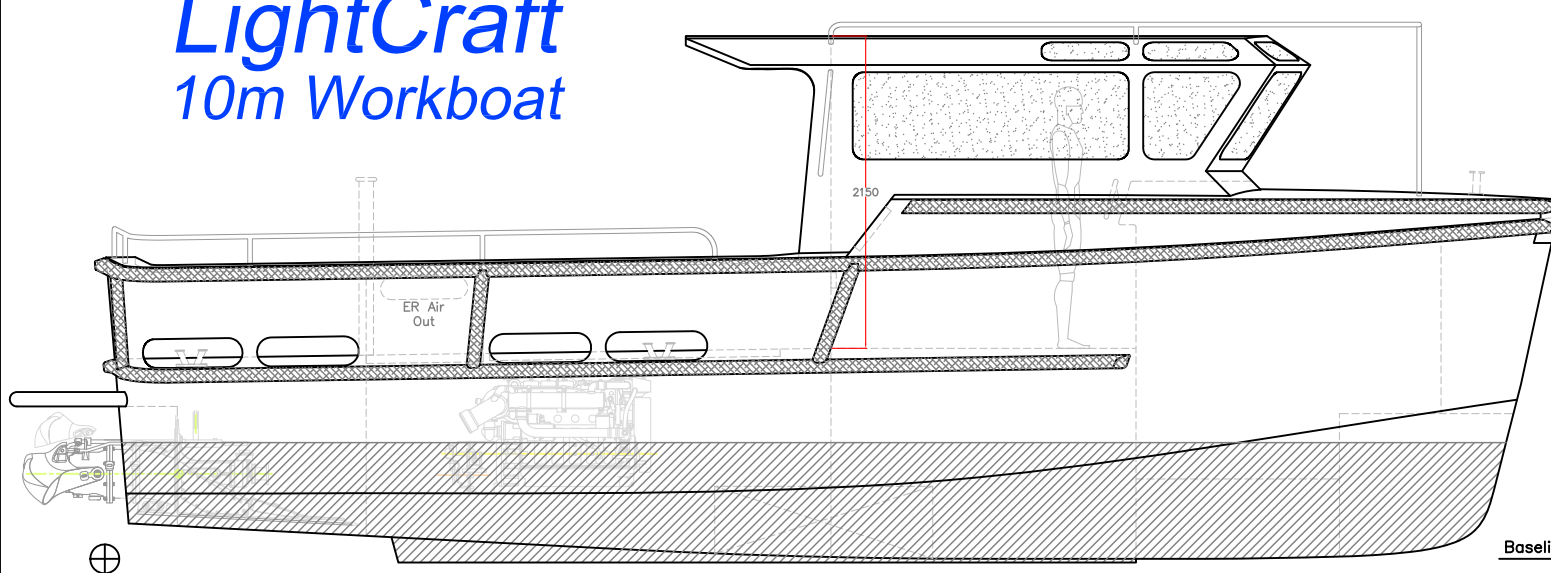
**LightCraft**  
aluminium workboats

VESSEL: 10m Workboat			
TITLE: GENERAL ARRANGEMENT			
DWG No: 10W-100	DATE: 5/8/2010	SCALE: nts A3	DRAWN: MDW
copyright ©			

**SCY DESIGN**  
Consulting Naval Architects & Mechanical Engineers  
48 Sweetgum St, Ashmore, Queensland 4214, Australia  
Ph: 617 5597 3521 www.scy.net.au

THIS DRAWING AND THE INFORMATION CONTAINED HEREON IS SUPPLIED ON THE UNDERSTANDING THAT IT IS THE EXCLUSIVE PROPERTY OF SOUTHPORT CUSTOM YACHTS PTY. LTD. AND MUST NOT BE USED OR REPRODUCED IN WHOLE OR IN PART WITHOUT PERMISSION IN WRITING.

# LightCraft 10m Workboat

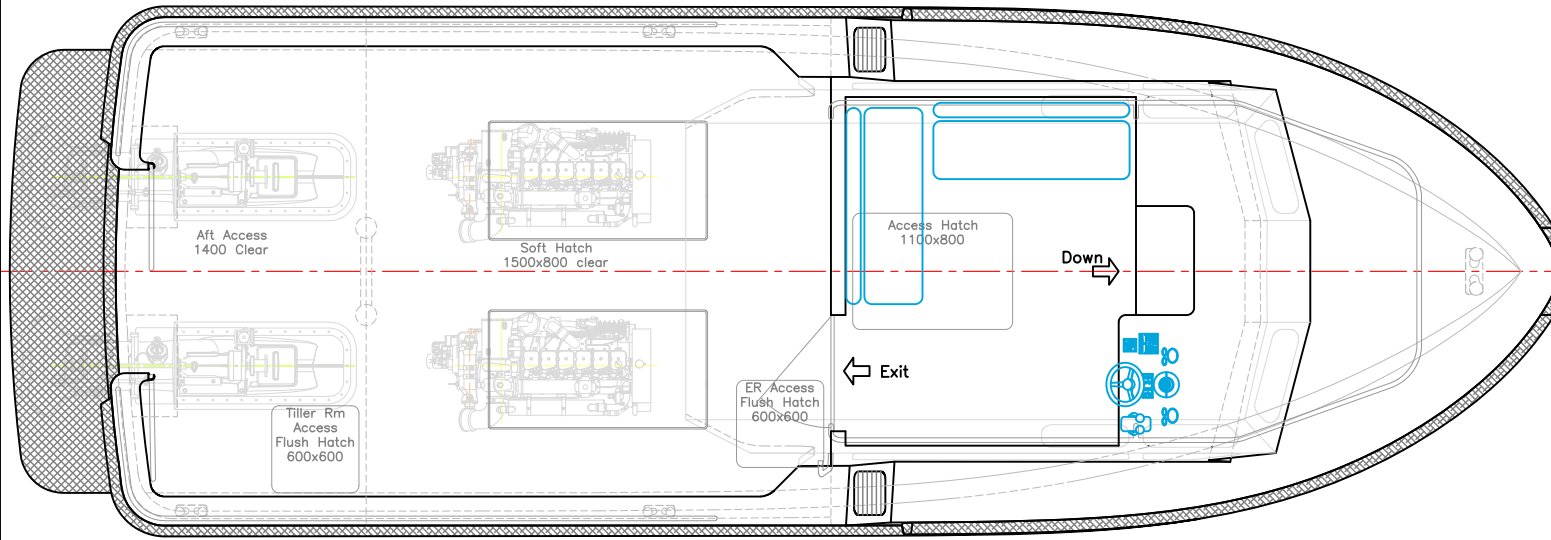
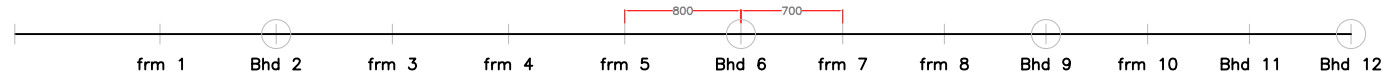


Baseline

## PRINCIPAL DATA

- LOA: 10.7m
- Lmoulded: 10.0m
- LWL: 9.5m
- BEAM: 3.5m
- Bmoulded: 3.65m
- DRAFT: 0.75m
- DEADRISE: 15deg.
- FUEL: 1200lts
  
- MAIN ENGINES: 2 x Cummins QSB6.7  
261kW @ 2800rpm Int
- GEARBOX: 2 x ZF220
- PROPULSION: 2 x HJ292 Waterjet
  
- SPEED-max: 32knots
- SPEED-cruise: 25knots
- RANGE-cruise: 280nm

Construction:  
Marine Grade Aluminium  
Survey: USL 2C



**LightCraft**  
Aluminium Workboats

VESSEL:	10m Workboat		
TITLE:	GENERAL ARRANGEMENT		
DWG No:	10W-100	DATE:	2/2/2011
SCALE:	1:- A4	DRAWN:	MDW
copyright ©			

**SCY DESIGN**  
Consulting Naval Architects & Mechanical Engineers  
48 Sweetgum St, Ashmore, Queensland 4214, Australia  
Ph: 617 5597 3521 www.scy.net.au

THIS DRAWING AND THE INFORMATION CONTAINED HEREON IS SUPPLIED ON THE UNDERSTANDING THAT IT IS THE EXCLUSIVE PROPERTY OF SOUTHPORT CUSTOM YACHTS PTY. LTD. AND MUST NOT BE USED OR REPRODUCED IN WHOLE OR IN PART WITHOUT PERMISSION IN WRITING.