

LightCraft

13.6m Cray Boat

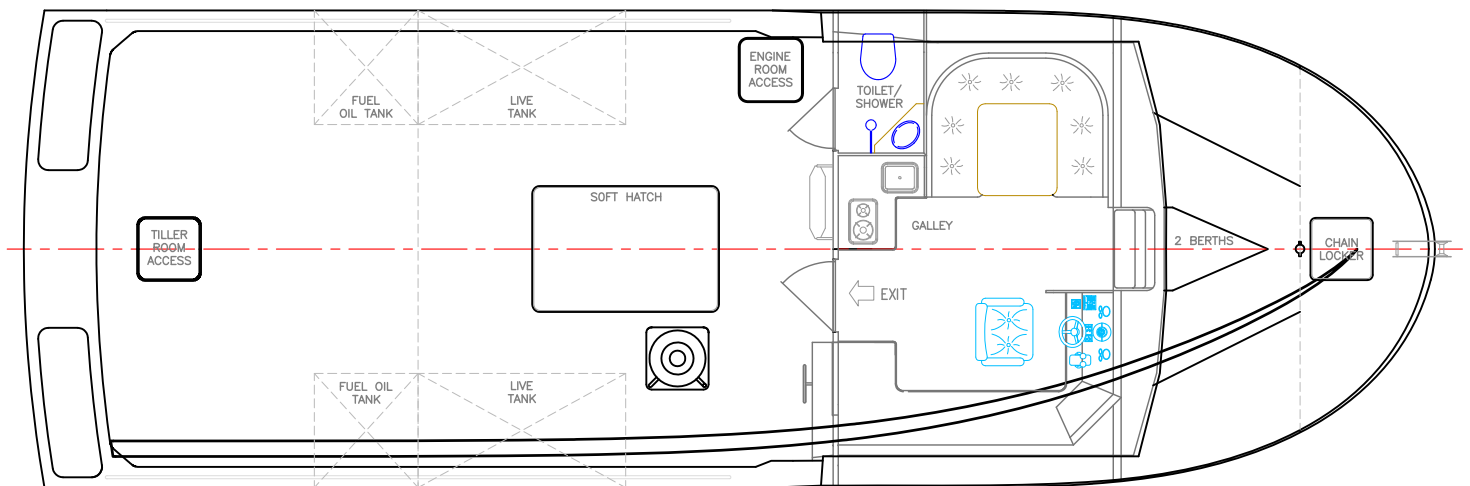
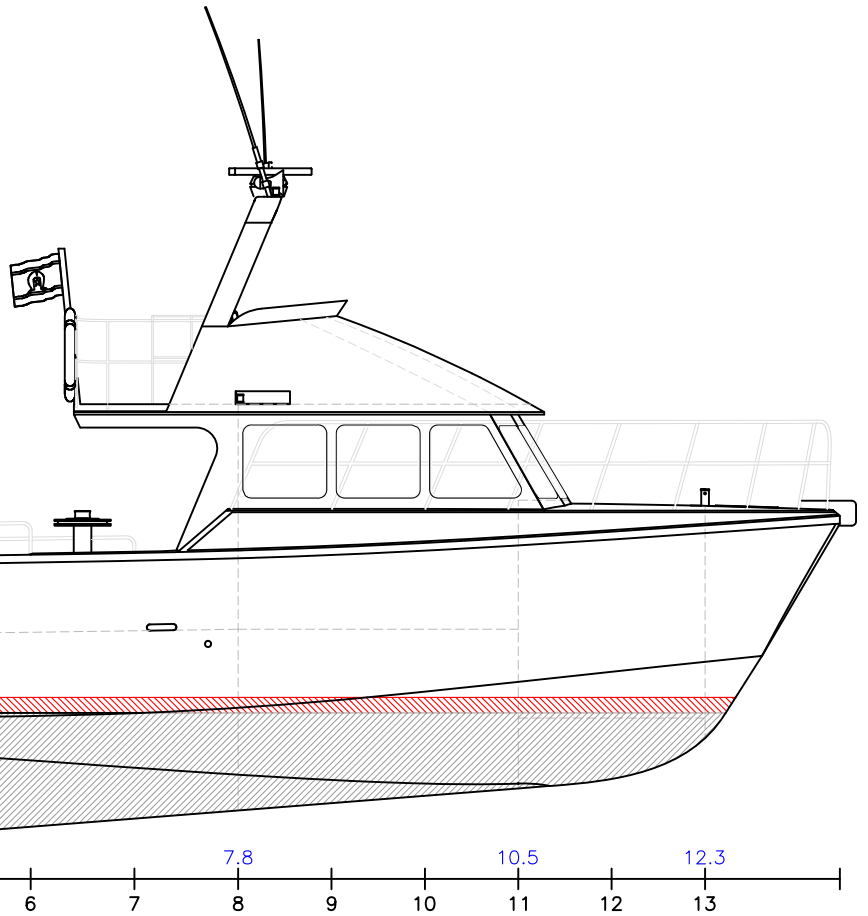


SCY Design

48 Sweetgum St, Ashmore Qld 4214, Australia
Ph: (617) 5597 3521 www.scy.net.au



13.6m CRAY BOAT



PRINCIPAL DATA

Length Overall	13.60 metres	Main Engines	MAN D2848 LE401
Length WL	11.80 metres		490kW @ 2100rpm
Beam	4.60 metres	Gearbox	MG5145A 2.448:1 ratio
Draft	1.4 metres	Propulsion	1 x 28" fixed pitch
Construction	Marine Grade		five blade prop
	Aluminium	Fuel Capacity	1,500 litres
Maximum Speed	26 knots	Freshwater	100 litres
Cruising Speed	21 knots		

LightCraft
Aluminium Workboats

VESSEL: 13.6m Cray Boat
 TITLE: GENERAL ARRANGEMENT
 DWG No: 13.6C-100 DATE: 7/4/2003 SCALE: DRAWN: MDW
 copyright ©

SCY Design
 Naval Architecture & Marine Industrial Design
 48 Sweetgum St, Ashmore, Queensland 4214, Australia
 Ph: 617 5597 3521 www.scy.net.au

THIS DRAWING AND THE INFORMATION CONTAINED HEREON IS SUPPLIED ON THE UNDERSTANDING THAT IT IS THE EXCLUSIVE PROPERTY OF SOUTHPORT CUSTOM YACHTS PTY. LTD. AND MUST NOT BE USED OR REPRODUCED IN WHOLE OR IN PART WITHOUT PERMISSION IN WRITING.