

LightCraft

46m Crew / Supply
Vessel



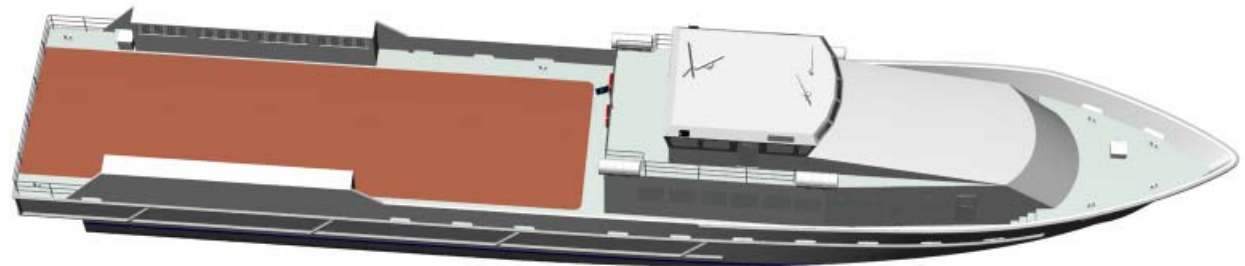
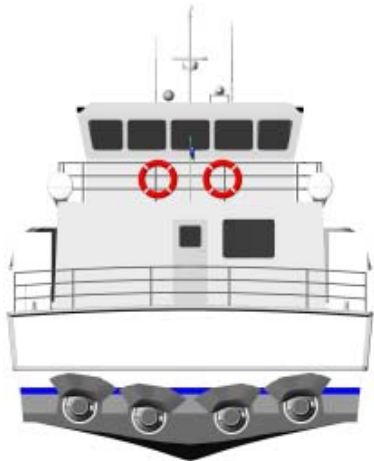
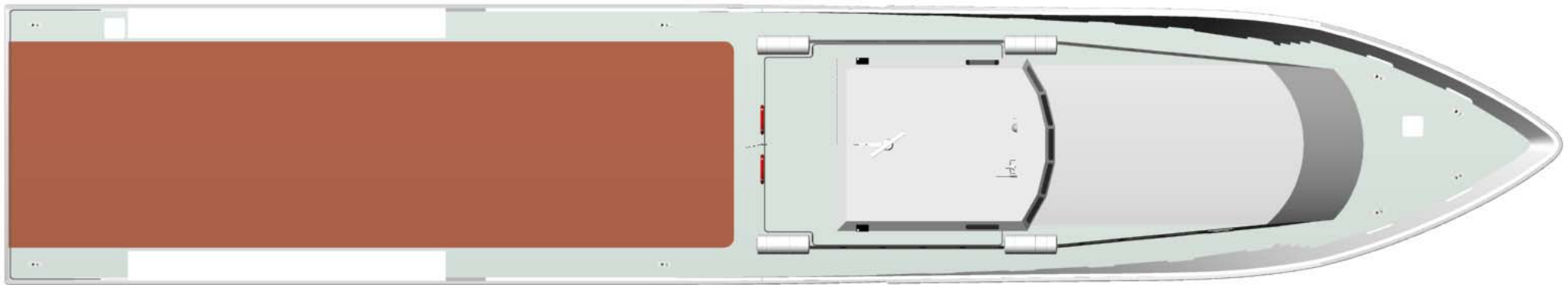
SCY Design

48 Sweetgum St, Ashmore Qld 4214, Australia
Ph: (617) 5597 3521 www.scy.net.au



LightCraft

46m Crew / Supply
Vessel

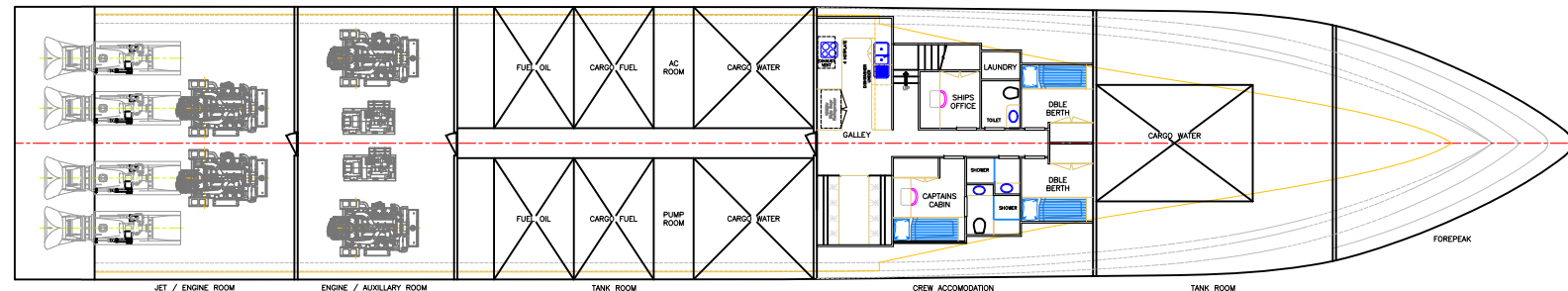
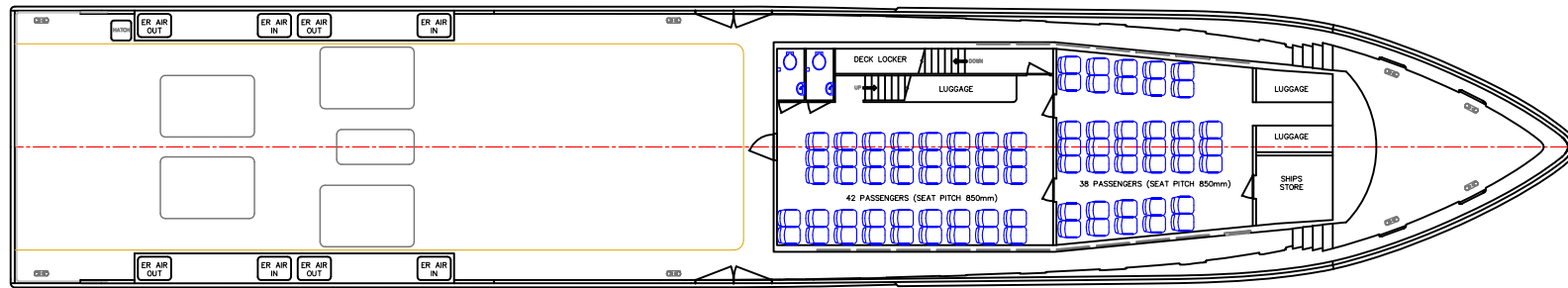
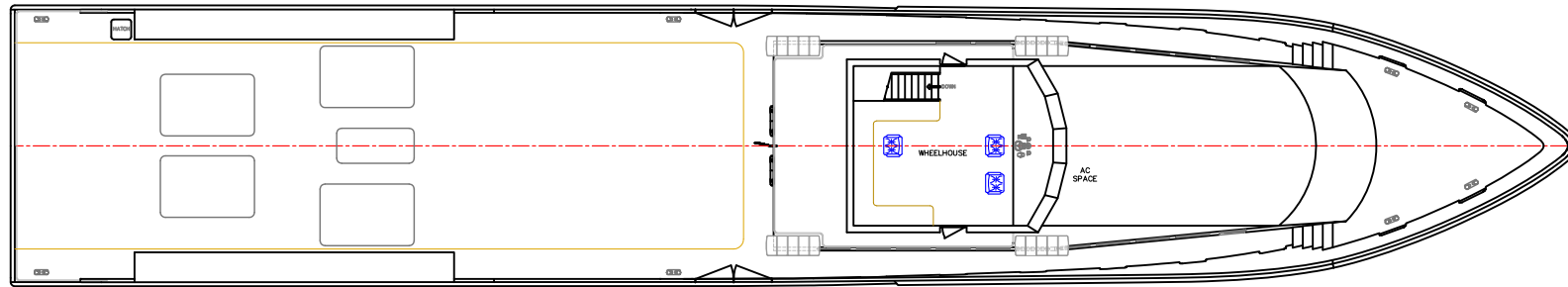
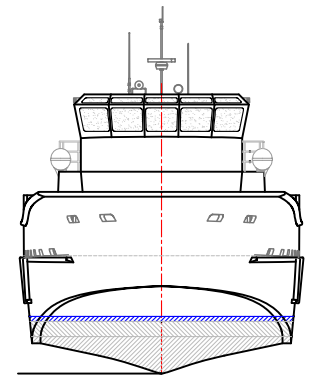
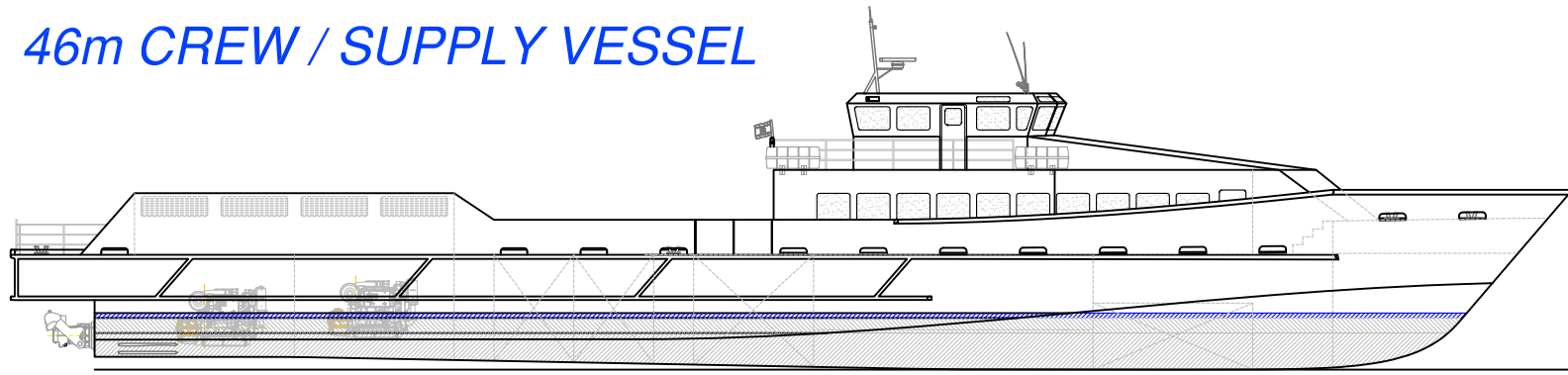


SCY Design

48 Sweetgum St, Ashmore Qld 4214, Australia
Ph: (617) 5597 3521 www.scy.net.au



46m CREW / SUPPLY VESSEL



PRINCIPAL PARTICULARS

LOA:	47.0m
Lmoulded:	46.7m
LWL:	41.1m
BEAM:	8.2m
DEPTH:	3.5m
DRAFT:	1.6m
SHIPS FUEL:	45000lts
SHIPS WATER:	4000ltrs
MAIN ENGINE:	4 x CAT 3508B
	783kW @ 1600rpm
GEARBOX:	ZF 4540 1:1.463
PROPULSION:	4 x HM571
AUXILLARY:	2 x CAT 3054
	75kVa @ 1500rpm
SPEED (light):	30knots
SPEED (cruise):	25knots
RANGE (approx):	1900nm

PAYLOAD

PASSENGERS:	80
CREW:	5
CARGO DECK AREA:	135m ²
CARGO DECK LOAD:	150t
CARGO FUEL:	45000ltrs
CARGO WATER:	82000ltrs

SURVEY

CLASSIFICATION:	DNV
SURVEY:	USL 1A
CONSTRUCTION:	ALUMINIUM



VESSEL: 46m CREW / SUPPLY VESSEL
 TITLE: GENERAL ARRANGEMENT
 DWG No: 46C-100 DATE: 12/3/2006 SCALE: DRAWN: MDW
 SCY Design
 Consulting Naval Architects & Mechanical Engineers
 48 Sweetgum St, Ashmore, Queensland 4214, Australia
 Ph: 617 5597 3521 www.scy.net.au
 COPYRIGHT © THIS DRAWING AND THE INFORMATION CONTAINED HEREON IS SUPPLIED IN WHOLE OR IN PART WITHOUT PERMISSION IN WRITING.
 OF SOUTHPORT CUSTOM YACHTS PTY. LTD. AND MUST NOT BE USED OR REPRODUCED IN WHOLE OR IN PART WITHOUT PERMISSION IN WRITING.